

BE PREPARED

Generators sold through the co-op

Suddenly, your lights go out and your house goes silent. You run outside to check your breakers and notice your neighbor's house is also dark. Panic starts to set in. How long are we going to be without power? A few minutes is one thing. A few hours, even. But what if it is days?

Lower Yellowstone Rural Electric Cooperative (LYREC) makes every effort to provide uninterrupted power. However, the weather is unpredictable and can cause a lot of damage, which can result in extended outages.

Standby generator

As a homeowner, you understand the havoc an extended power outage can have on your home. A permanently installed automatic standby generator provides backup power protection and peace of mind for your family or business during a power outage.

The generator produces constant and stable power that computers and other sensitive electronic equipment can use safely. Standby generators can run for extended periods using a permanent natural gas or liquid propane fuel supply. In a power outage, a permanently installed generator returns your home or business to power within seconds, even when you're away.

Portable generator

A portable generator is a good power solution if you don't want to invest in a standby generator or if you need electricity away from home. It can supply power to vital devices around the home when you're facing a blackout. Most portable generators operate on gasoline or liquid propane.

If you are thinking about purchasing a generator, LYREC can help you find the right size generator. If you would like more information on generators, contact LYREC at 406-488-1602. ■



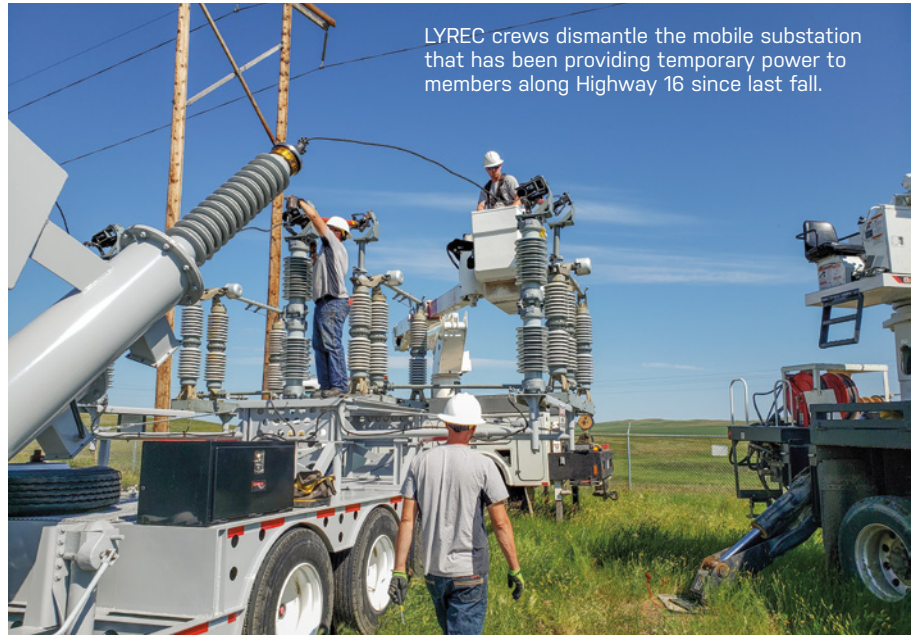
Happy Labor Day!

The office will be closed Sept. 7.

Mobile substation provides needed power

The new stretch of line along Highway 16 is complete. The proposal to upgrade the line began last summer after members requested new loads which would have surpassed the available capacity. After meeting with Lower Yellowstone Rural Electric Cooperatives (LYREC) engineers and weighing different alternatives, LYREC decided the most cost-effective option was to build a line coming from the Iversen substation to provide the requested load and allow LYREC additional capacity for the future.

Approximately 7 miles of three-phase and single-phase line was built, along with a two-way feed. The two-way feed gives LYREC the capability to isolate the issue in



LYREC crews dismantle the mobile substation that has been providing temporary power to members along Highway 16 since last fall.

the event of a planned or extended outage to minimize the number of consumers affected.

While the line was being built, LYREC used the mobile substation as a temporary power source. Typically, the mobile substation

is used to avoid long outages for maintenance or when a substation fails. The mobile substation has been a great asset to the cooperative. Without it, LYREC would not have been able to meet the members' timeline for power. ■

Planned power outage

"That was a convenient power outage," said no one ever. Planned power outages are a nuisance, regardless of when they occur. Lower Yellowstone Rural Electric Cooperative's (LYREC) goal is to be proactive, rather than reactive. LYREC has over 2,000 miles of line, so when the operations crew identifies a concern that will likely cause issues in the future, the crew takes action to resolve the problem.

During the July 8 planned power outage that affected all of Girard, Lambert and Sioux Pass, several maintenance issues were addressed. While the line was disconnected, the crews were able to change a connection on a switch, repair a pole, and take down the mobile substation that had been providing temporary power since last fall.

When LYREC can plan an outage to upgrade a service or repair issues before they cause an interruption of power, the outage is shorter due to the crews being in place and having all needed equipment. If you see something on our service line that doesn't look right, please don't hesitate to call LYREC. ■



Lower Yellowstone Rural Electric Cooperative lineworkers **Tanner Roth** (in bucket) and **Lee Alvstad** upgrade the electric service at the Sidney-Richland Airport. The two-way feed will assist in minimizing outage times at the airport and surrounding areas.



The LYREC crew replaces a pole and cross arms during the July 8 planned power outage.



FARM EQUIPMENT IS ON THE MOVE

Follow these other tips:

- Look over work areas carefully for overhead power lines and utility poles. Make sure you, your family and employees know the location of overhead power lines, and use routes to avoid the lines when moving equipment. Do this every year, as equipment sizes and soil conditions may change.
- Be aware of increased heights of equipment, especially new equipment with higher antennas.
- Avoid moving large equipment alone. Have someone watch as you move equipment to ensure you are clear of power lines.
- Be extra careful when working around trees and brush; they often make it difficult to see power lines.

LOOK UP AND LOOK AROUND POWER LINES AND POLES MAY BE CLOSER THAN YOU THINK

For your safety, make sure you have at least 10 feet of clearance between power lines and your combines, grain augers, balers and front-end loaders.

Farming equipment is vulnerable to hitting power lines because of its large size, height and extensions. Newer, larger equipment is especially at risk.

Look for low-hanging lines when you enter and leave a field.

Keep in mind that uneven ground and shifting soil conditions can put you in harm's way.

If your equipment does make contact with a power line, do not leave the cab. Call 911, tell others to stay away, and wait for help.

If you are a Lower Yellowstone Rural Electric Cooperative member and you see a power line issue that may need attention, call LYREC at 406-488-1602.

Your safety matters. Working together helps ensure the safety of all!

What if you contact a power line?

Imagine that you are driving a combine to the field when things come to a screeching halt. You look back to see what's stopping you, only to discover that you're tangled in an overhead power line! What do you do?

- First, **DON'T** climb out. If your equipment does contact a power line, stay in the cab and call for help. Warn others to stay away and wait until the electric cooperative arrives. Most utility lines are uninsulated, bare wires. Do not let your body become a direct link between the power line and the ground.
- If you must leave the combine due to immediate danger, such as a fire, jump as far away as you can, making sure that no part of your body touches the combine and the ground at the same time. Land with both feet together and hop or shuffle your feet a few inches at a time, making sure to never break contact with the ground or cause separation between your feet.
- Once you're off the combine, do not go back until your local electric co-op disconnects the power line.

Capital credits

This year, Lower Yellowstone Rural Electric Cooperative (LYREC) returned \$1,010,769 in retired capital credits to our members. Capital credits come from margins, or money leftover at the end of the year after all operating costs and expenses have been paid. The margins are allocated to each member's capital credit account based on how much electricity the member purchases. The allocated margins are retained and used by LYREC for operating capital, which reduces the amount the cooperative needs to borrow.

In June, the bills were credited for active members. Checks were mailed to former members. However, some were returned for insufficient addresses. If you have contact information for anyone listed below, please call our office at 406-488-1602.

Albin, Cory	Billings, Mont.
Anderson, Robert	Williston, N.D.
Buxbaum, Colton.....	Savage, Mont.
Carsten, Vance.....	Sidney, Mont.
Cayko, Frances.....	Sidney, Mont.
Couture, Anthony & Tina	Savage, Mont.
Ernster, Larry.....	Sidney, Mont.
Falcon, Nancy	Trenton, N.D.
Hawks, Kandy & George	Sidney, Mont.
Hendrickson, Ronald	Cartwright, N.D.
Herman, Kip and Tamie	Sidney, Mont.
Indridason, Rueben.....	Trenton, N.D.
Karst, Shawnette.....	Billings, Mont.
Kizziar, John	Glendale, Ore.
Kuykendall, Jim H.....	Cartwright, N.D.
Kwasney, Scott & Cindy	Billings, Mont.
Liesener, Adeline.....	Sidney, Mont.
Luna, Raul.....	Bryan, Texas
Micheletto, John & Denise	Billings, Mont.
McMurry, Bobbi.....	Culbertson, Mont.
Mullin, Vicky.....	Rock Springs, Wyo.
Nehring, Terrie	Trenton, N.D.
Noble, Jim	Fairview, Mont.
Paulson, Jill & Kraig	Longview, Wash.
Romo, Clarence.....	Bainville, Mont.
Sheehan, Ronnie	Sidney, Mont.
Smale, Raymond & Barbara	Anaconda, Mont.
Whatman, Rick.....	Sidney, Mont.
Wallace, Harley Jr	Vining, Minn.
Wiggins, Donald & Beverly.....	Meridian, Idaho

Operating report

Year to date:	June 2019	June 2020
Total miles energized	2,103	2,104
Total number of meters	6,151	6,202
Kilowatt-hours sold	135,181,134	132,016,872
Revenue	\$13,988,418	\$13,863,787
Total expenses	\$13,330,639	\$13,608,592
Operating margins	\$2,995,935	\$759,674



3200 W. Holly - Sidney, MT 59270

Phone: 406-488-1602

Fax: 406-488-6524

Website: www.lyrec.com

TRUSTEES

Allen Thiessen	President
Greg Rauschendorfer	Vice President
John Redman.....	Secretary/Treasurer
Colin Gartner.....	Trustee
Dennis Schmierer.....	Trustee
Dennis Nelson	Trustee
Jim Vitt.....	Trustee

EMPLOYEES

Jason Brothen.....	General Manager
Brenda Bond	Chief Financial Officer
Jami Propp	Member Service Manager
Kyle Kavanagh.....	IT Coordinator
Margo Zadow.....	Billing Coordinator
Pam Wilcoxon	Plant Accountant
Tiffani Hentges.....	Customer Service Representative
Melissa Buckley.....	CSR/Staff Assistant
Chris Hillesland.....	Chief Operations Officer
Rich Gorde.....	Foreman
Eric McPherson.....	System Controller
Kevin Goff.....	Operations Assistant
Kelly Keyser	Operations Manager
Lee Alvstad.....	Journeyman Lineman
Aaron Eide.....	Journeyman Lineman
Bryan Franck	Journeyman Lineman
Jesse Obergfell	Journeyman Lineman
Blade Jankovsky.....	Journeyman Lineman
Tanner Roth.....	Journeyman Lineman
Ryder Peterson	Journeyman Lineman
Lee Delp	Apprentice Lineman
Cole Jankovsky.....	Apprentice Lineman
Brandon Mueller.....	Master Electrician
Dan Gieser.....	Energy Management Supervisor
Mike Eberling	Mechanic
Richard Tremblay	Service Technician
Bo Kindopp.....	GIS/Easement Technician
Corey Candee	Chief Information Officer
Jeremy Reese.....	Information Technology Technician
Edwin Gatzke.....	Line Locator/Meter Reader
Justin King	Warehouse Supervisor

Your Touchstone Energy® Cooperative 