

Ensuring reliability as power supply tightens



Traditional large-scale power suppliers such as coal and nuclear plants are being closed and replaced by alternatives on a much smaller scale.

You expect reliable and affordable electricity from your electric cooperative, so how does your co-op deliver on that promise?

A complex network of electricity generators and tens of thousands of miles of electrical lines work together to ensure that enough electricity is available on the coldest winter morning and during the dog days of summer.

What happens when the demand for power overwhelms the ability to provide it? That's a particularly vexing question, given the transition taking place in how electricity is produced and shared across this network.

The key to meeting the energy needs so essential to your quality of life is balancing electricity supply with demand. While that may sound simple, a complex web of facilities and organizations works together to make it happen each day.

Regional transmission organizations coordinate, control and monitor the electric grid across several states in a region. Think of them as energy traffic managers on an interstate highway system, regulating the number of cars - in this case, electricity - and their destination.

Even so, on some days there is an imbalance in that

system that leads to rolling power interruptions or blackouts, so-called "max-gen" events. In those cases, supply simply cannot keep up. In the Midcontinent region comprised of 15 states, there were six max-gen events from 2006-2016. Since 2016, there have been 15, including three last July and August alone.

Simply, that's because power plants that generate electricity are being closed faster than new producers come online. In most cases, traditional large-scale power suppliers such as coal and nuclear plants are being closed and replaced by alternatives on a much smaller scale. And this gap is closing more quickly, despite the development of new natural gas-fueled power plants.

As more electric utilities pursue zero- or low-carbon initiatives by 2035 and beyond, this challenge will grow more complex. So, what is the answer?

Electric cooperatives and others in the energy sector will continue to develop renewable options and pursue new technologies. But absent new large-scale alternatives and advances in energy storage, the stalwarts of today's energy fleet - local and nuclear energy facilities - must continue to operate in many regions. In some, they remain the most cost-effective options for producing electricity. ■

Nominating Committee names candidates

A Nominating Committee consisting of Bob Albin, Dennis Trudell, Steve Joslin and Ben Larson met at Lower Yellowstone Rural Electric Cooperative's (LYREC) office March 3. The purpose of the meeting was to nominate candidates for the election of directors in District 1 and 2.

The committee selected Jim Vitt for District 1 and Colin Gartner for District 2. Per the bylaw changes that the members approved during the June 2019 annual meeting, there will be no nomination made from the floor at the annual meeting. Therefore, the election of trustees will be by acclamation. Jim Vitt will be reelected to represent District 1, and Colin Gartner will be reelected for District 2.

District 1

Jim Vitt is a lifelong resident of Richland County, growing up in the Sioux Pass community. He and his wife, Loretta, raised four children, have nine grandkids, and two great-grandkids. They raise registered Angus cattle, along with son, Dale, and his wife Jill. Jim graduated from Fairview High School in 1970 and attended Dawson Community College for six months. He was in the U.S. Army National Guard for six years.

Jim is a member of St. Matthew's Catholic Church, the American Angus Association, Montana Angus Association and Eastern Montana Stockgrowers Association. He served three terms on the Fairview school board and a term on the St. Matthews's parish council.

Jim states, "I have learned a tremendous amount during the terms I have served on Lower Yellowstone Rural Electric Cooperative's board. I have completed my credentialed cooperative director courses, and am halfway through the board leadership courses, but I still have a lot to learn. I would appreciate your support to continue serving the members of LYREC."



Jim Vitt

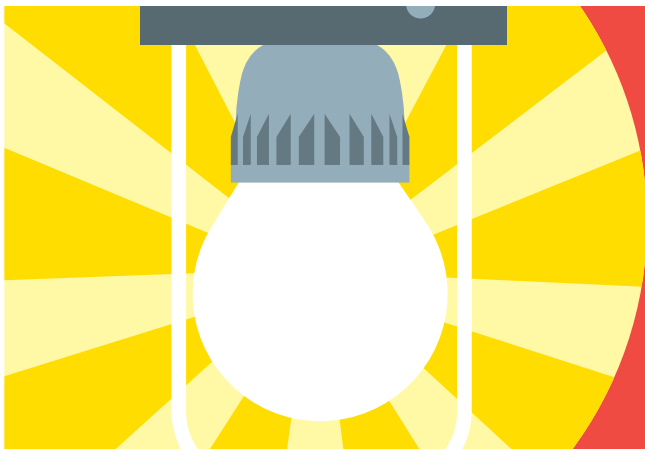


Colin Gartner

District 2

Colin Gartner is a Sidney native and graduated from Sidney High School. He attended Montana State University in Bozeman and received a bachelor's degree in agricultural education. He is currently farming and ranching northwest of Sidney. He is married to Sue, who is a nurse at the Sidney Health Center's Extended Care. They have two children: Marianne, 25, and Christopher, 22. Marianne is attending Dickinson State University and will graduate in May.

Gartner was elected director of District 2 in 1996. He also serves as chairman of the Montana Electric Cooperatives' Association ACRE committee. ACRE is the Action Committee for Rural Electrification, a bipartisan political action committee. Gartner is a member of the Montana Grain Growers, Montana Stockgrowers, MonDak Area Stockgrowers Association, National Cattlemen's Beef Association and Sidney FFA Alumni. ■



**Purchase energy
efficient appliances
and lighting
to reduce your
electrical load.**

Annual meeting scholarships: CREATE A GREETING CARD

Lower Yellowstone Rural Electric Cooperative (LYREC) will be awarding 20, \$1,000 scholarships in June. This year, for a chance to win a scholarship, you will need to create a greeting card. You are already taking beautiful shots for your Snapchat and Instagram pages, so why not put your skills to work and snag a \$1,000 college scholarship with your photo?

Scholarship eligibility criteria:

- The applicant or parent/legal guardian must be a member who is currently receiving electric service from LYREC.
- The applicant must be a student who is enrolled or planning to enroll in a full-time college/university or vocational technical school in the fall of 2021.
- An individual applicant can receive a maximum of two annual meeting scholarships.

Photo guidelines:

- The photo must be a scenic photo of LYREC's service territory (no individuals in photo).
- The applicant must send a tagline for the photo within the email.
- The applicant must send a separate photo of themselves.
- Photo entries MUST be a minimum of 2,000 pixels.
- The entries must be the applicant's original work.

Submittal information:

- Download a scholarship form at www.lyrec.coop.
- Photos must be electronic and sent to jamip@lyrec.coop.
- The subject line of the email must be "Greeting Card Contest."

The scholarship recipients will be drawn at random. However, if any of the required information is missing or incomplete, the applicant will be omitted from the scholarship pool. The deadline to apply for the scholarship is 5 p.m. May 27. The scholarship recipients will be announced June 3 on Facebook. ■



2021 virtual annual meeting

The annual meeting of members of Lower Yellowstone Rural Electric Cooperative (LYREC) will be held virtually this year due to COVID-19 precautions. A meeting invite will be posted on LYREC's website and social media pages closer to the event. Members will be able to join the meeting via video or by phone. Each member account that joins the virtual event will receive a bill credit for \$25. The meeting will be held at 6 p.m. Tuesday, June 8.

Members will be sent the annual meeting report, financials, proposed bylaw changes and a ballot for

voting in mid-May. Prior to the annual meeting, LYREC will be sharing reports "via video" from its attorney explaining the proposed bylaw changes, along with a report from President Allen Thiessen. You will be able to watch these reports on LYREC's Facebook page or at www.lyrec.coop.

The ballots must be signed and returned to "Survey and Ballot Systems" in the prepaid envelope by June 4. Please call the office if you have any question regarding the annual meeting or voting procedure. ■



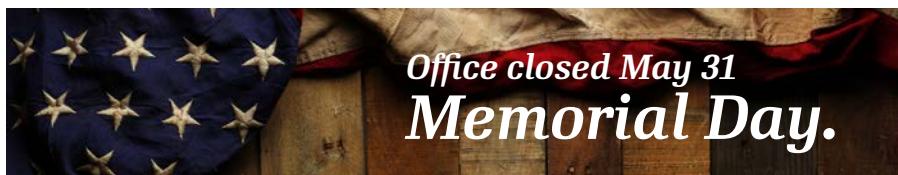
Lower Yellowstone Electric Cooperative (LYREC) is able to offer its members a discount by being a Touchstone Energy® member. Simply call 1-800-MEDORA-1 and give the discount code of "Touch 2021" for a 15 percent discount on any of the following during any night of the season:

THINGS TO DO:

- Medora Musical
- Pitchfork steak fondue
- Bully Pulpit Golf Course

LODGING AT ANY OF THE FOLLOWING:

- Elkhorn Quarters
- Badlands Motel
- Rough Riders Hotel



Operating report

Year to date:	February 2019	February 2020
Total miles energized	2,104	2,127
Total number of meters	6,185	6,222
Kilowatt-hours sold	51,935,904	48,721,398
Revenue	\$5,126,165	\$4,879,269
Total expenses	\$5,193,123	\$5,029,278
Operating margins	(\$51,056)	(\$149,175)

3200 W. Holly - Sidney, MT 59270

Phone: 406-488-1602
 Fax: 406-488-6524
 Website: www.lyrec.com

TRUSTEES

- Allen Thiessen President
- Greg Rauschendorfer Vice President
- John Redman Secretary/Treasurer
- Colin Gartner Trustee
- Dennis Schmierer Trustee
- Dennis Nelson Trustee
- Jim Vitt Trustee

EMPLOYEES

- Jason Brothen General Manager
- Brenda Bond Chief Financial Officer
- Jami Propp Member Service Manager
- Kyle Kavanagh IT Coordinator
- Margo Zadow Billing Coordinator
- Pam Wilcoxon Plant Accountant
- Tiffani Hentges Customer Service Representative
- Melissa Buckley CSR/Staff Assistant
- Chris Hillesland Chief Operations Officer
- Rich Gorde Journeyman Lineman
- Eric McPherson System Controller
- Kevin Goff Operations Assistant
- Kelly Keysor Operations Manager
- Lee Alvstad Journeyman Lineman
- Aaron Eide Journeyman Lineman
- Bryan Franck Journeyman Lineman
- Jesse Obergfell Journeyman Lineman
- Blade Jankovsky Journeyman Lineman
- Tanner Roth Journeyman Lineman
- Ryder Peterson Journeyman Lineman
- Cole Jankovsky Journeyman Lineman
- Lee Delp Apprentice Lineman
- Brandon Mueller Master Electrician
- Dan Gieser Energy Management Supervisor
- Mike Eberling Mechanic
- Richard Tremblay Service Technician
- Bo Kindopp GIS/Easement Technician
- Corey Candee Chief Information Officer
- Jeremy Reese Information Technology Technician
- Edwin Gatzke Line Locator/Meter Reader
- Justin King Warehouse Supervisor

Your Touchstone Energy® Cooperative 