



Co-op takes part in Career Exploration Day

Lower Yellowstone Rural Electric Cooperative (LYREC) lineworkers Preston Long and Trey Schepens visited West Side Elementary School in Sidney for Career Exploration Day. The kindergarten through second-grade students were full of curiosity and had plenty of questions for the lineworkers.

LYREC brought along its bucket truck, digger truck and electric pickup, giving students the opportunity to get a close look at the equipment. The kids also got to try on personal protective gear and learn about the tools and safety measures lineworkers use every day.

Thank you to West Side Elementary for the invitation. LYREC was proud to help inspire the next generation, because it is never too early to start dreaming about your future career! ■





Local students learn electric safety

If you have children in one of the local elementary schools, you may have heard them talking about electricity and safety. That's because Lower Yellowstone Rural Electric Cooperative (LYREC) conducted several high-voltage safety demonstrations in May.

The students asked some great questions. Two favorites were: "If electricity and water don't mix, why don't electric eels get shocked?" and "How does electricity know to find the fastest and easiest path to the ground? Does it have a brain or something?"

During the demonstrations, LYREC lineworkers showed electrical arcs that grabbed the students' attention. Most importantly, the students learned how to stay safe around electricity.

These demonstrations support LYREC's cooperative principles. One of LYREC's key principles is to educate its members and another is concern for community. By teaching students about electrical safety, LYREC hopes to keep everyone safe and informed. ■

Join us July 31st for Co-op Day
at the Richland County Fair!

STARTING AT 4PM

Root Beer



Float Day

Congratulations!

The following students have been awarded a \$1,000 scholarship for their submission to the 2025 photo contest.

Aubree Johnson
Cade Tombre
Dalton Bouchard
Ella Norby
Hailey Holzworth
Hallie Schantz
Kinley Wieland

Lauren Kjos
Lauren Prevost
Reese Graves
Robert Knotts
Sloane Tuck
Wyatt McPherson

Recipients are required to submit their class schedule, showing both the student's name and the name of the college, by Aug. 1. Schedules should be sent to scholarships@lyrec.coop. ■

RV SAFETY:

What to know before you hit the road

Planning a summer RV trip? Using generators can pose serious carbon monoxide (CO) risks. Modern RVs come with many home-like conveniences powered by generators, which can emit CO, a deadly, odorless gas produced by burning fuel.

Key safety tips:

- Inspect and maintain your generator's exhaust system regularly.
- Never use a damaged generator.
- Position portable generators with exhaust directed away from your campsite.
- Watch for unusual noises, especially after long inactivity.
- Run your generator weekly to prevent moisture buildup and engine issues.
- Avoid using generators at night.
- Maintain your generator properly.

Signs of potential CO leaks:

- Yellow or orange flame instead of the normal blue

gas appliance flame.

- Heavy condensation on windows, especially near appliances.
- Dark or sooty stains around appliances.
- Frequent pilot light outages.
- Although CO is odorless, you may notice an unusual smell like burning or something overheating.

Symptoms of CO poisoning:

- Flu-like symptoms such as headaches, dizziness, nausea and fatigue.
- Confusion, chest pain, shortness of breath or even loss of consciousness.

If you or someone you know experiences these symptoms, seek immediate medical attention and fresh air. CO can build up in RVs, tents and enclosed spaces, endangering people and pets. Use CO detectors, test them monthly and change batteries every six months or when you hear a low-battery chirp. Stay safe and enjoy your trip! ■

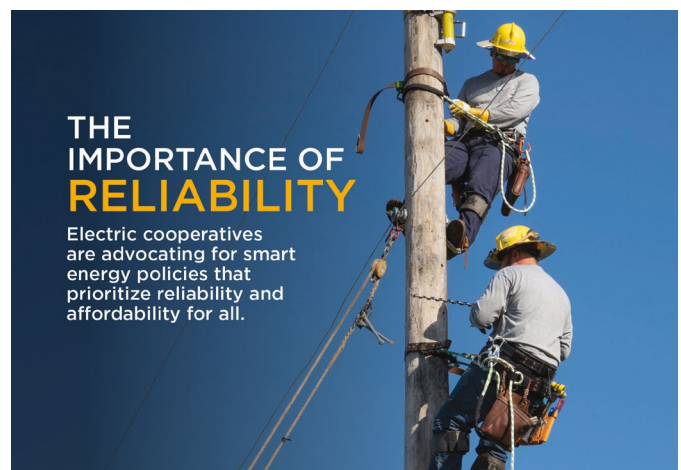
EPA takes steps to support reliable, affordable power

The Environmental Protection Agency (EPA) has announced plans to revisit several of the Biden administration's energy regulations, such as the Clean Power Plan 2.0 (CPP 2.0). This plan imposes strict emission standards on existing coal-fired power plants, requiring them to implement carbon capture and sequestration (CCS) technologies to reduce carbon dioxide emissions by 90% by 2032. It also requires new natural gas-fired plants to be built with CCS technology.

As electricity demand continues to rise rapidly, the CPP 2.0 is accelerating the retirement of reliable generation resources faster than they can be replaced. The restrictions on coal-fired plants could result in higher power costs, compromise the reliability and stability of the electric grid, and lead to job losses.

Earlier this year, National Rural Electric Cooperative Association (NRECA) CEO Jim Matheson expressed concerns to EPA Administrator Lee Zeldin, offering suggestions for reducing regulatory pressure on electric co-ops, while still protecting the environment and ensuring power remains reliable and affordable.

In May, the EPA reported it is preparing to rescind



regulations designed to significantly curb emissions from coal and gas-fired power plants through the use of carbon technology. This policy shift is seen as a step toward making the U.S power grid more reliable and affordable. ■

New seasonal apprentice lineworkers

Lower Yellowstone Rural Electric Cooperative (LYREC) is excited to welcome Nik Burke and Jaeger Gunville to the team as our new seasonal apprentice lineworkers.

Burke, originally from Glasgow, brings hands-on experience and a love for the outdoors. After graduating from the Bismarck State College lineworker program in May 2023, he honed his skills at Missoula Electric Cooperative before making his way to Sidney. When he's not working in the field, you'll find Burke hunting, fishing, snowmobiling or enjoying just about any outdoor adventure.



Burke



Gunville

Gunville hails from Minot, where he was born and raised. He recently completed the Bismarck State College lineworker program in May. Prior to line school, Gunville worked at SRT Communications. Outside of work, he enjoys hitting the golf course, firing up the grill and spending time on the water.

Welcome aboard! ■



Discounts offered for Medora vacation

Lower Yellowstone Rural Electric Cooperative is able to offer its members discounts in Medora by being a Touchstone Energy® member. Simply call 800-MEDORA-1 and give the discount code of "TOUCH2025" for a 15% discount on all of the following during any night of the season.

THINGS TO DO:

- Medora Musical
- Pitchfork steak fondue
- Bully Pulpit Golf Course
- Gospel Brunch tickets
- Old Town Hall Theater shows

LODGING AT ANY OF THE FOLLOWING:

- Elkhorn Quarters
- Badlands Motel
- Rough Riders Hotel
- Medora Campground

*The code is good for reservations over the phone, website or in person.
A greens fee discount will be applied at check-in at the golf course.*

3200 W. Holly - Sidney, MT 59270

Phone: 406-488-1602

Website: lyrec.coop

TRUSTEES

Allen Thiessen	President
Greg Rauschendorfer	Vice President
Dennis Schmierer	Secretary/Treasurer
Colin Gartner	Trustee
Tim Franzen	Trustee
Dennis Nelson	Trustee
Jim Vitt	Trustee

EMPLOYEES

Jason Brothen	General Manager
Jami Propp	Member Service Manager
Pam Wilcoxon	Chief Financial Officer
Melissa Buckley	Plant Accountant
Kyle Kavanagh	IT Director
Margo Zadow	Billing Coordinator
Katie Jochim	CSR/Billing Coordinator
Tiffani Hentges	Customer Service Representative
Chris Hillesland	Chief Operations Officer
Rich Gorde	Journeyman Lineman
Eric McPherson	System Controller
Kevin Goff	Operations Assistant
Kelly Keysor	Operations Manager
Aaron Eide	Journeyman Lineman
Bryan Franck	Journeyman Lineman
Jesse Obergfell	Journeyman Lineman
Tanner Roth	Journeyman Lineman
Ryder Peterson	Journeyman Lineman
Cole Jankovsky	Journeyman Lineman
Preston Long	Journeyman Lineman
Trey Schepens	Apprentice Lineman
Jory Bell	Apprentice Lineman
Nicholas Burke	Apprentice Lineman
Jaeger Gunville	Apprentice Lineman
Brandon Mueller	Master Electrician
Mike Eberling	Mechanic
Dan Gieser	EMS
Lee Alvstad	Mechanic/EMS
Richard Tremblay	EMS
Bo Kindopp	GIS/Easement Technician
Tom Hall	GIS Specialist
Corey Candee	Chief Information Officer
Jeremy Reese	Information Technology Technician
Edwin Gatzke	Line Locator/Groundsman
Justin King	Warehouse Supervisor
Parker Brothen	Groundsman

Your Touchstone Energy® Cooperative 