

2017 rates to increase

After a thorough review of each rate class, and ample discussion, the board of directors approved rates for 2017. The fact is, the cost of buying and delivering electricity to you, our members, continues to rise.

When compared to other commodities, electricity remains a

great value. For example, over the past 10 years, gasoline has shot up 12.66 percent on average annually, according to the U.S. Bureau of Labor Statistics. A loaf of white bread rose 3.73 percent annually, and a dozen eggs jumped 7.39 percent per year. In comparison, electricity has increased just 3.7 percent a year nationally.

So, what should you expect from the rate increase? Starting with the Jan. 1 usage, all rate classes will be charged 7.10 cents per kilowatt-hour (KWH). The free first 10 kilowatts (KW) will also be eliminated. The table below shows the comparison between the old and new base charge.

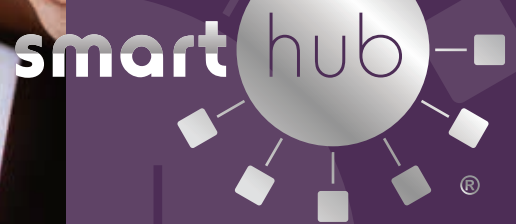
New Rates 2017	Bill Class	Old Base Charge	New Base Charge
Residential Sales	Residential Sales	\$10	\$15
Seasonal grain dryers	Residential Sales	\$10	\$15
Seasonal stock pumps	Residential Sales	\$10	\$15
Irrigation: single-phase	Irrigation	\$10	\$15
Irrigation: large single phase	Irrigation	\$10	\$15
Irrigation: three-phase	Irrigation	\$23	\$35
Small commercial: single-phase	Small Commercial	\$10	\$15
Small commercial: three-phase under 50 KVA	Small Commercial	\$23	\$35
Large commercial/industrial: single-phase	Large commercial/industry	\$10	\$15
Large Commercial/Industrial Under 500 KVA	Large commercial/industry	\$23	\$45
Three phase: schools, public infrastructure (water, sewer)	Small Commercial	New Rate Class	\$35
Large commercial/industrial: over 1,000 KVA	Large commercial/industry	\$23	\$75

As you can see from the table above, Lower Yellowstone Rural Electric Cooperative's (LYREC) base charge for residential meters will be \$15 per meter. By adjusting the base rate, the KWH charge and the KW charge, the board of

directors is providing the lowest possible cost, consistent with sound business practices to you, the member-owners.

As stated in the December issue, LYREC's wholesale power rate has increased a total of 21 percent in

the past two years. After 25 years of holding the rates steady, LYREC can no longer absorb the power cost. The new 2017 rates will begin for sales starting Jan. 1, 2017, and the bill you receive in February will reflect the rate increase. (Meter 20132) ■



LYREC offers payment options SmartHub mobile app

Lower Yellowstone Rural Electric Cooperative (LYREC) has all kinds of members, and that is why the cooperative offers many different payment options. For those of you who wish to manage your account using your mobile device, LYREC offers a powerful app available for both Apple and Android devices. Best of all, it's free!

The SmartHub mobile app allows you to pay bills, track usage, receive notifications and much more. To download the app, visit your app store and search for "SmartHub." If you do not have a smartphone or tablet, you can access SmartHub via your computer at www.lyrec.com.

Pay Now

The Pay Now option allows members to access basic account information and to make payments online. Pay Now offers a quick way to pay, but differs from SmartHub,

as it doesn't offer the in-depth information that SmartHub offers. To access Pay Now, login to www.lyrec.com and click the "Pay Now" tab.

Pay by phone at 1-844-209-7159

If you want to make a payment on your bill over the phone using a credit/debit card or check, you can call the toll-free number, 1-844-209-7159. The system is automated and all of your personal information, such as card number and payment amount, will be entered by you.

At any time, you may hang up and this will discontinue the phone call. There is no additional fee. Make sure to have your account number ready.

LYREC was required to move to the automated system to be compliant with the Payment Card Industry (PCI) Data Security Standard. These standards are designed to help prevent credit card fraud through increased data

controls and ensures the cooperative's continued ability to accept debit and credit card payments.

Hand delivery/drop boxes

You are always welcome to stop in LYREC's office to make a payment during business hours. If you are unable to stop in during business hours, LYREC has two drop boxes for members' convenience. The first box is located at the office by the LYREC sign and the second box is located across the road from Reese & Ray's IGA on Second Ave. N.W. ■



Jan. 31 scholarship deadline nearing!

Basin Electric Power Cooperative and Montana Electric Cooperatives' Association (MECA) scholarship applications are available!

The applicant's parents or guardians must be members of Lower Yellowstone Rural Electric Cooperative.

The applicant must enroll in a two-year or four-year college, university or vocational/technical school.

Contact your school counselor, Lower Yellowstone Electric or download the application at www.lyrec.com.

Drop off applications at Lower Yellowstone Electric's office or mail to: LYREC, P.O. Box 1047, Sidney MT 59270.

The application deadline is Jan. 31. ■

Help with heating is available

If you or someone you know needs help this heating season, funds are available. If you reside in Montana, you can contact Energy Share at 800-227-0703. If you reside in North Dakota, contact Community Action at 701-572-8191. Montana residents may pick up an application at Lower Yellowstone Rural Electric Cooperative (LYREC) for the Low Income Home Energy Assistance Program (LIHEAP) or Energy Share.

Once you submit your application, it can take up to two months before receiving assistance. If you are finding yourself in a financial bind, please pick up an application today. ■



LYREC employees decorate the cooperative's "Santa's Workshop" float for Sidney's Parade of Lights.



Congratulations

Tanner Roth has successfully completed one of the world's most comprehensive training programs for power line personnel by becoming a journeyman lineworker.

Tanner graduated from the Bismarck State College Lineworkers Program in 2013. He was employed with Montana-Dakota Utilities for more than a year before beginning his career at Lower Yellowstone Rural Electric Cooperative.

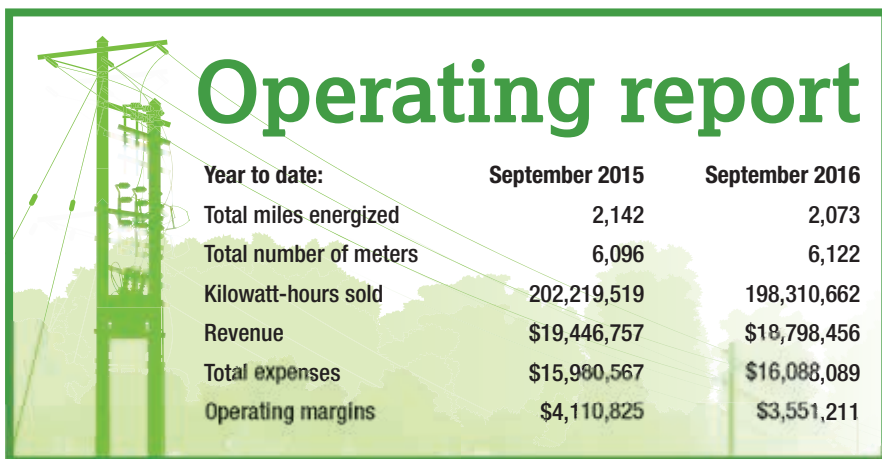
Congratulations to Tanner for achieving his journeyman lineworkers certificate! ■



FOLLOW US ON FACEBOOK

HIDDEN NUMBERS

If you find your meter number hidden in this issue, it is worth a \$25 credit on your next statement. The meter number will appear within the four Lower Yellowstone Rural Electric Cooperative pages. Give us a call during the month your meter is listed, and claim your \$25 bill credit.

Operating report

Year to date:	September 2015	September 2016
Total miles energized	2,142	2,073
Total number of meters	6,096	6,122
Kilowatt-hours sold	202,219,519	198,310,662
Revenue	\$19,446,757	\$18,798,456
Total expenses	\$15,980,567	\$16,088,089
Operating margins	\$4,110,825	\$3,551,211



3200 W. Holly - Sidney, MT 59270
Phone: 406-488-1602
Fax: 406-488-6524
Website: www.lyrec.com

TRUSTEES

Allen Thiessen President
 Greg Rauschendorfer Vice President
 John Redman Secretary/Treasurer
 Colin Gartner Trustee
 Dennis Schmierer Trustee
 Dennis Nelson Trustee
 Jim Vitt Trustee

EMPLOYEES

Jason Brothen General Manager
 Brenda Bond Chief Financial Officer
 Jami Propp Member Service Manager
 Kyle Kavanagh IT Coordinator
 Cassie Parker Staff Assistant
 Margo Zadow Billing Coordinator
 Pam Wilcoxon Plant Accountant
 Tiffani Hentges Customer Service Representative
 Chris Hillesland Chief Operations Officer
 Rich Gorde Foreman
 Eric McPherson Foreman
 Kevin Goff Operations Assistant
 Kelly Keysor Operations Manager
 Lee Alvstad Journeyman Lineman
 Richard Tremblay Journeyman Lineman
 Aaron Eide Journeyman Lineman
 Bryan Franck Journeyman Lineman
 Jesse Obergfell Journeyman Lineman
 Blade Jankovsky Journeyman Lineman
 Tanner Roth Journeyman Lineman
 Ryder Peterson Apprentice Lineman
 Brandon Mueller Master Electrician
 Dan Gieser Meter Technician
 Mike Eberling Mechanic
 Bo Kindopp GIS/Easement Technician
 Corey Candee Chief Information Officer
 Edwin Gatzke Line Locator/Meter Reader
 Justin King Material/Warehouse Supervisor

Your Touchstone Energy® Cooperative 