

82ND ANNUAL MEETING



Wednesday, June 6, 2018
Richland County Event Center

Registration/Dinner 5 p.m.
Registration ends 6:05 p.m.
Meeting begins 6:15 p.m.

- Election of two directors
- 30, \$1,000 "luck-of-the-draw" scholarships awarded
- Each member that attends the business meeting will receive a \$25 bill credit
- Bucket truck rides starting at 5 p.m.
- Safety demonstrations starting at 5 p.m.
- Children's outdoor activities during business meeting (weather permitting)

Nominating Committee names candidates

A Nominating Committee consisting of Dennis Trudell, Steve Joslin and Dean Faulkner met at Lower Yellowstone Rural Electric Cooperative's (LYREC) office March 7. The purpose of the meeting was to nominate candidates for the election of directors in District 1 and 2. The election will be held during the June 6 annual meeting.

The committee selected Jim Vitt for District 1 and Colin Gartner for District 2. Candidates may also be nominated from the floor at the June 6 annual meeting.

District 1 **JIM VITT**

Jim Vitt is a lifelong resident of Richland County, growing up in the Sioux Pass community. He and his wife, Loretta, raised four children, and have nine grandkids. They raise registered Angus cattle, along with their son, Dale, and his wife, Jill. Jim graduated from Fairview High School in 1970, and attended Dawson Community College for six months. He was in the U.S. Army National Guard for six years.

Jim is a member of St. Matthew's Catholic Church, the American Angus Association, Montana Angus Association and Eastern Montana Stockgrowers Association. He served three terms on the Fairview school board and a term on the St. Matthew's parish council.

Jim states, "I have learned a tremendous amount during the term I have served on Lower Yellowstone Rural Electric Cooperative's board. I have completed the credentialed cooperative director courses, and am halfway through the board leadership courses, but I still have a lot to learn. I would appreciate your support to continue serving the members of LYREC."



Vitt



Gartner

District 2 **COLIN GARTNER**

Colin is a Sidney native and graduated from Sidney High School. He attended Montana State University in Bozeman and received a bachelor's degree in agricultural education. He is currently farming and ranching northwest of Sidney. He is married to Sue, who is a nurse at the Sidney Health Center's Extended Care. They have two children: Marianne, 23, and Christopher, 20. They are both students attending Dickinson State University.

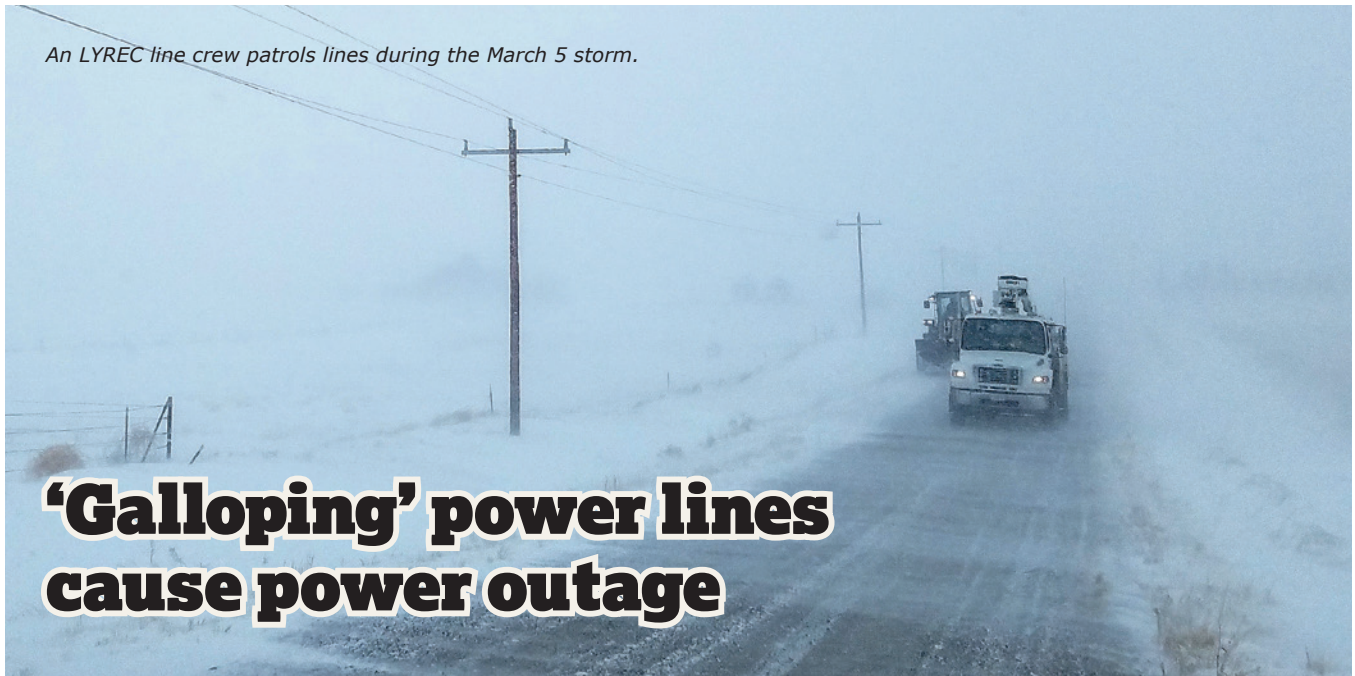
Colin was elected director of District 2 in 1996. He also serves as chairman of the Montana Electric Cooperatives' Association ACRE committee. ACRE is the Action Committee for Rural Electrification, a bipartisan political action committee. Colin is a member of the Montana Grain Growers, Montana Stockgrowers, MonDak Area Stockgrowers Association, National Cattlemen's Beef Association and Sidney FFA Alumni. ■



**FOLLOW US ON
FACEBOOK**

www.facebook.com/loweryellowstone

An LYREC line crew patrols lines during the March 5 storm.



‘Galloping’ power lines cause power outage

Nearly 1,100 Lower Yellowstone Rural Electric Cooperative (LYREC) meters were without power March 5 due to “galloping lines” from a combination of high winds and ice buildup.

During these types of storms, the lineworkers patrol the affected lines, looking for any obvious damage. The crews found numerous cross arms and tie wires torn off due to the high winds and ice. In most instances, the crews were able to repair the line and restore power in a few hours. Many of our members lost power repeatedly throughout the day due to the circuits cutting out from the lines slapping together.

If you encounter power lines that are hazardously “galloping,” stay away, and contact LYREC. When galloping occurs, electrical equipment may come loose and fall, or ice may be dislodged from the lines, causing harm to anything in its path.

We appreciate you reporting any damage you see and your patience when power has been interrupted. Our line crews will work to get the power back on as quickly and safely as possible. (Meter No. T20687) ■

Scholarships available

Lower Yellowstone Rural Electric Cooperative will award 30, \$1,000 scholarships at the co-op’s annual meeting Wednesday, June 6.

To be eligible:

- The parent/guardian of the applicant must be a member who is currently receiving electric service from Lower Yellowstone Electric.

- The applicant must be a student who is enrolled or planning to enroll in a full-time undergraduate course of study at an accredited two-year or four-year college/university or vocational school for the upcoming fall term.
- The applicant must be accompanied by a parent/guardian and both must be present to win.
- An individual applicant can receive a maximum of two luck-of-the-draw scholarships.

The scholarship registration will be from 5-6:05 p.m. Late entries will not be accepted. ■

HIDDEN NUMBERS

If you find your meter number hidden in this issue, it is worth a \$25 credit on your next statement. The meter number will appear within the four Lower Yellowstone Rural Electric Cooperative pages. Give us a call during the month your meter is listed, and claim your \$25 bill credit.



Budget billing Sign up April through August

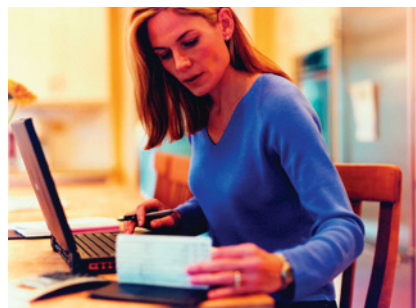
Are you having trouble budgeting for your monthly bills? Lower Yellowstone Rural Electric Cooperative (LYREC) offers budget billing that can help take the guesswork out of your electric bill.

This service is available to all residential members who are current with their electric bill, have an “A” credit rating, and have established a 12-month history with LYREC. The member can remain on budget billing as long as the account remains current.

To determine your budget billing amount, LYREC averages your current and last 11 months of bills. Therefore, there will be variations each month,

but the change will not be as drastic and will make budgeting easier.

If you would like to sign up for budget billing, call LYREC’s office to see if you qualify. To sign up, you will need to turn in your application between April 1 and Aug. 31. You can stop by the office to get a form or go to www.lyrec.com. ■



Operating report

Year to date:	January 2017	January 2018
Total miles energized	2,111	2,101
Total number of meters	6,136	6,169
Kilowatt-hours sold	26,480,782	25,786,445
Revenue	\$2,503,490	\$2,472,645
Total expenses	\$2,412,770	\$2,398,905
Operating margins	\$96,408	\$856,368



3200 W. Holly - Sidney, MT 59270

Phone: 406-488-1602

Fax: 406-488-6524

Website: www.lyrec.com

TRUSTEES

Allen Thiessen	President
Greg Rauschendorfer	Vice President
John Redman.....	Secretary/Treasurer
Colin Gartner.....	Trustee
Dennis Schmierer.....	Trustee
Dennis Nelson	Trustee
Jim Vitt.....	Trustee

EMPLOYEES

Jason Brothen.....	General Manager
Brenda Bond	Chief Financial Officer
Jami Propp	Member Service Manager
Kyle Kavanagh.....	IT Coordinator
Margo Zadow.....	Billing Coordinator
Pam Wilcoxon.....	Plant Accountant
Tiffani Hentges.....	Customer Service Representative
Melissa Buckley.....	CSR/Staff Assistant
Chris Hillesland.....	Chief Operations Officer
Rich Gorde.....	Foreman
Eric McPherson.....	Foreman
Kevin Goff.....	Operations Assistant
Kelly Keyser	Operations Manager
Lee Alvstad.....	Journeyman Lineman
Aaron Eide.....	Journeyman Lineman
Bryan Franck	Journeyman Lineman
Jesse Obergfell	Journeyman Lineman
Blade Jankovsky	Journeyman Lineman
Tanner Roth.....	Journeyman Lineman
Ryder Peterson	Apprentice Lineman
Brandon Mueller.....	Master Electrician
Dan Gieser.....	Energy Management Supervisor
Mike Eberling.....	Mechanic
Richard Tremblay	Service Technician
Bo Kindopp.....	GIS/Easement Technician
Corey Candee.....	Chief Information Officer
Edwin Gatzke.....	Line Locator/Meter Reader
Justin King	Warehouse Supervisor

Your Touchstone Energy® Cooperative