

Small change makes BIG IMPACT

Lower Yellowstone Rural Electric Cooperative's (LYREC) seventh cooperative principle is "concern for community." In 2017, LYREC implemented Operation Round Up (ORU), which gives back to nonprofit and community organizations in LYREC's service territory. This charitable program is funded by rounding up our members' electric bills. On average, a member donates 50 cents per month to this program.

In 2021, the Operation Round Up trustees granted a total of \$14,575 to these nonprofit and community organizations in LYREC's service territory:

- Richland County Emergency Shelter Coalition
- Fairview Leaders for Readers
- Badlands Brushpoppers 4-H Club
- Sunrise Women's Clinic
- Richland Hockey Youth
- MonDak Heritage Center
- Fairview Public School
- Lambert Public School
- Sidney Middle School
- Savage Fire Department
- Richland Opportunities Inc.
- Sidney Area Chamber of Commerce
- ABATE
- Eastern Montana Bible Camp Association
- Brorson Farmhands 4-H Club

On behalf of the Operation Round Up board, thank you for helping make our community a better place to live and work. For more information on ORU, please call our office at 406-488-1602. ■



Operation Round Up trustee, **Jen Boyer**, presents the Lower Yellowstone ABATE chapter a check for \$250 to help with its annual Christmas toy drive.



The **Brorson Farmhands 4-H Club** received \$250 from Operation Round Up to help cover the cost of its fifth annual hay bale decorating contest.



Operation Round Up Trustee **Ann Bouchard** presents \$800 to Eastern Montana Bible Camp Manager **Anthony Troester** to replace the cable for the camp's climbing wall.

Wendy Johnson, Operation Round Up trustee, presents **Kali Godfrey**, from the Sidney Area Chamber of Commerce, with a check for \$750. The funds will be used to purchase sound equipment the chamber will use at local events. The cost savings is estimated to be at least \$20,000 annually.



**Follow us on Facebook,
Instagram and Twitter**

Need assistance heating your home?

April 30 is the last day the Low Income Energy Assistance Program (LIEAP) of Montana is accepting applications. The Low Income Home Energy Assistance Program (LIHEAP) of North Dakota's application deadline is May 31.

If you live in Montana and need assistance, contact Energy Share at 800-227-0703. If you live in North Dakota, contact Community Action at

701-572-8191. You may also download an application at www.lyrec.coop or call Lower Yellowstone Rural Electric Cooperative.

Eligibility is based on your household income and resources. Failure to provide all requested information and verification will delay the eligibility determination and may result in application denial.

Below is the income eligibility criteria for Montana residents:

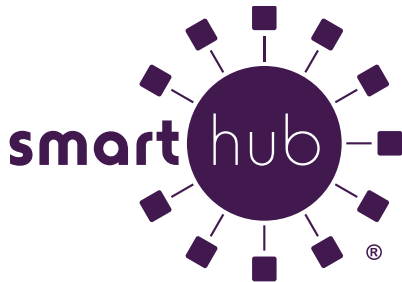
Number in household	Annual income
1	\$27,282
2	\$35,676
3	\$44,071
4	\$52,465

Below is the income eligibility criteria for North Dakota residents:

Number in household	Annual income
1	\$32,475
2	\$42,467
3	\$52,460
4	\$62,452

If you do not fall within these guidelines, but have an emergency and need assistance, please call LYREC at 406-488-1602 or 844-441-5627 for a referral. ■

Go paperless and get \$10!



How do you sign up for paperless billing?

1. If you are a new SmartHub user, either download the SmartHub app on your phone/tablet or go to www.lyrec.coop and register as a new SmartHub user.
2. As a SmartHub subscriber, you will receive an email notification each month after your bill is ready to view. Using this notification, you can view or pay your bill online.
3. If you would like to sign up for text notifications, login to SmartHub, go to "Notifications," then "Manage Contacts," then "+Add Phone Contact" and add your cellphone number. Check the box, "Receive Text Messages," and you will receive a code via text. Enter the special code, then click "continue."
4. If you are already signed up for SmartHub, but are receiving paper bills, you will need to log into your SmartHub account, go to "My Profile," then "Update My Paperless Settings" and toggle the paperless switch to "on."

Lower Yellowstone Rural Electric Cooperative (LYREC) is offering a one-time \$10 bill credit for going paperless through June 30!

For those who signed up for paperless bills prior to 2022, LYREC hopes you enjoyed your \$10 credit on your January statement. Those who sign up between now and June 30 will receive a bill credit on the following month's bill.

If you are having trouble signing up for SmartHub, or if you are not interested in SmartHub, but would like to sign up for paperless, call our office at 406-488-1602.

By going paperless, you'll save trees, paper and the cost of printing and mailing bills, which will ultimately save YOU and other LYREC members money. ■

ELECTRICITY 101:

What is a kilowatt-hour?

Whether it's via an app or on paper, the most apparent part of your electric bill is that bottom line – how much your electricity costs. Your electricity is billed at a rate per kilowatt-hour (kWh), and

managing how much electricity you use is tied to that measurement. If you want to better manage your electric bill, it helps to know what kWh means.

What is a kWh?

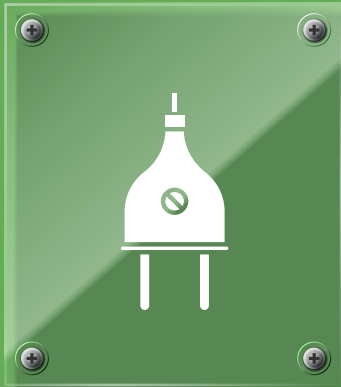
A kWh is an amount of electricity used during one hour. One kWh is equal to the power consumption of 1,000 watts, or 1 kilowatt, for one hour.

For example, a 100-watt light bulb used for 10 hours is equivalent to one kWh.

One watt is a small amount of power. Some devices require only a few watts to operate, while other devices require larger amounts. An appliance's label will state how many watts it uses.

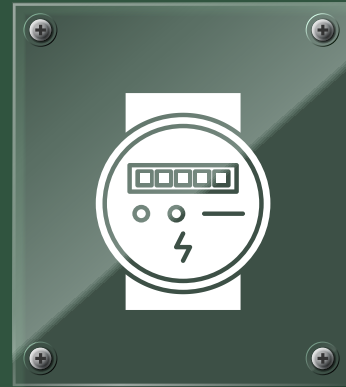
THE DIFFERENCE BETWEEN

KILOWATT



Power required for the appliance to work

KILOWATT-HOUR



Energy used each hour the appliance is on

HOW MUCH ELECTRICITY DOES AN AMERICAN HOME USE?

In 2020, the average annual electricity consumption for a U.S. residential utility customer was

10,715 kWh

or an average of about

893 kWh

per month.

WHAT CAN I DO WITH 1 KWH?

(based on U.S. average electric rates)

89 slices of bread toasted

12 pots of coffee brewed

276 charges for your cellphone

18 hours of refrigerator use

3 loads in the washer

20 hours on your laptop



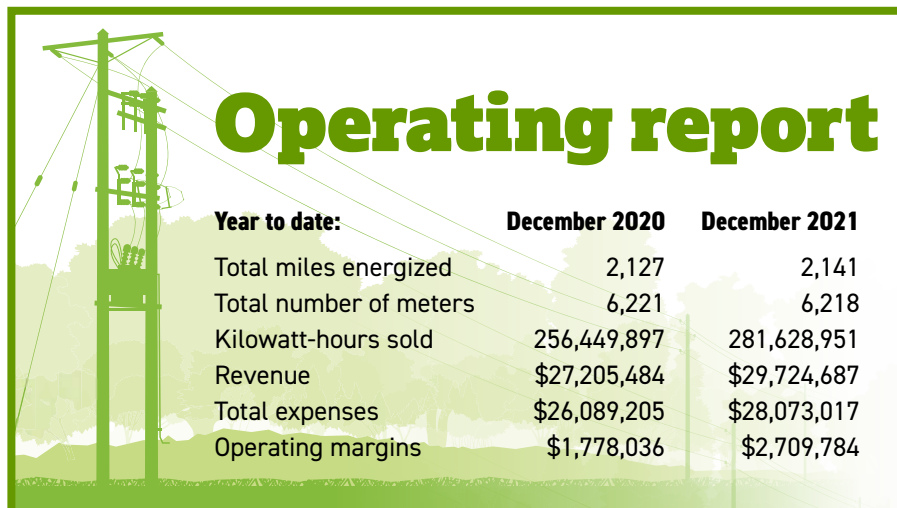
North Dakota grant available

The Rural Development Finance Corporation (RDFC) is offering a grant up to \$2,000 per member cooperative to be used to support community-owned entities, nonprofits and community-based projects.

Eligible projects include: community-owned businesses (cafe, grocery store, motel); community facilities (ambulance services, fire districts, recreation, hospital/clinic,

community center and others); or community-based projects (such as schools and youth projects) that benefit rural areas and lead to community betterment. Medical fundraisers or general operating costs are not eligible for the grant.

This grant is based on matching funds. If you would like more information on this grant, please contact Jami at Lower Yellowstone Rural Electric Cooperative. ■



Operating report

Year to date:	December 2020	December 2021
Total miles energized	2,127	2,141
Total number of meters	6,221	6,218
Kilowatt-hours sold	256,449,897	281,628,951
Revenue	\$27,205,484	\$29,724,687
Total expenses	\$26,089,205	\$28,073,017
Operating margins	\$1,778,036	\$2,709,784

3200 W. Holly - Sidney, MT 59270

Phone: 406-488-1602

Fax: 406-488-6524

Website: www.lyrec.com

TRUSTEES

Allen Thiessen President
 Greg Rauschendorfer Vice President
 Dennis Schmierer Secretary/Treasurer
 Colin Gartner Trustee
 Tim Franzen Trustee
 Dennis Nelson Trustee
 Jim Vitt Trustee

EMPLOYEES

Jason Brothen General Manager
 Brenda Bond Chief Financial Officer
 Jami Propp Member Service Manager
 Kyle Kavanagh IT Coordinator
 Margo Zadow Billing Coordinator
 Pam Wilcoxon Plant Accountant
 Tiffani Hentges Customer Service Representative
 Melissa Buckley Customer Service Representative
 Chris Hillesland Chief Operations Officer
 Rich Gorde Journeyman Lineman
 Eric McPherson System Controller
 Kevin Goff Operations Assistant
 Kelly Keyser Operations Manager
 Aaron Eide Journeyman Lineman
 Bryan Franck Journeyman Lineman
 Jesse Obergfell Journeyman Lineman
 Blade Jankovsky Journeyman Lineman
 Tanner Roth Journeyman Lineman
 Ryder Peterson Journeyman Lineman
 Cole Jankovsky Journeyman Lineman
 Lee Delp Apprentice Lineman
 Preston Long Apprentice Lineman
 Brandon Mueller Master Electrician
 Mike Eberling Mechanic
 Dan Gieser EMS
 Lee Alvstad Mechanic/EMS
 Richard Tremblay EMS
 Bo Kindopp GIS/Easement Technician
 Corey Candee Chief Information Officer
 Jeremy Reese Information Technology Technician
 Edwin Gatzke Line Locator/Groundsman
 Justin King Warehouse Supervisor

Your Touchstone Energy® Cooperative 