

Scholarship opportunities available

BEPC scholarship

Basin Electric Power Cooperative is offering a \$1,000 scholarship to a Lower Yellowstone Rural Electric Cooperative (LYREC) member's dependent. The applicant must be a student enrolled in a full-time undergraduate course of study at an accredited two-year or four-year college, university or vocational/technical school in the fall of 2024.

Scholarship recipients are selected based on academic record, leadership and participation in school and community activities, honors, work experience, a statement of education and career goals, and an outside appraisal. To apply, complete the required criteria, which can be obtained at www.lyrec.com. The applications are due Feb. 14.

MECA memorial scholarship

The Montana Electric Cooperatives' Association (MECA) is offering a \$500 scholarship to one eligible student from the northeast district of Montana. The applicant's parent(s)/guardian(s) must be LYREC members and the applicant must be attending college in the fall of 2024. Applications are judged based on academic strength, school and community activities, employment, volunteerism, community service and a personal statement.

A committee comprised of LYREC staff will choose one application to send to MECA for a chance to win a \$500 scholarship. The MECA committee will then choose one student to be awarded a scholarship.

To apply, complete the application form, along with all required materials. You may get an application at www.lyrec.com. MECA memorial scholarship applications are due Jan. 25.

Please send all applications to LYREC, P.O. Box 1047, Sidney, MT 59270. ■



Lower Yellowstone Rural Electric Cooperative employees decorated a "Merry Grinchmas" float for the Parade of Lights in Sidney.

Nominating Committee to meet in March

The Nominating Committee will meet Tuesday, March 5, at Lower Yellowstone Rural Electric Cooperative's (LYREC) office. The purpose of the Nominating Committee is to select candidates for the board of trustees.

The Nominating Committee will consist of two members each from District 1 and District 2. The committee will nominate one or more candidates for District 1 and District 2. The present trustees holding seats in these districts are Jim Vitt, District 1, and Colin Gartner, District 2.

Nominating Committee members are:

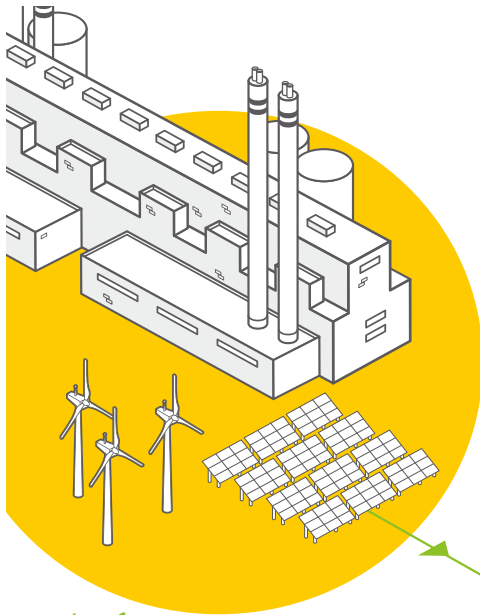
- Representing District 1 - Bob Albin and Mike Kjos
- Representing District 2 - Ben Larson and Scott Greenwood

If you are a member of LYREC, reside in District 1 or 2 and are interested in becoming a candidate for the board of trustees, contact one of the Nominating Committee members and ask to be considered for nomination.

If you have a joint membership, either member on the account can run for the board of trustees seat. A joint membership is entitled to one vote at any meeting of the cooperative. ■

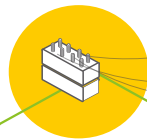
CRITICAL CONNECTIONS: HOW ELECTRICITY GETS TO YOU

The electric grid is considered one of the most complex machines in the world, delivering the electricity we need for everyday life.



step 1
GENERATION

Power plants generate electricity using a variety of energy sources, like solar, natural gas, nuclear and wind energy.



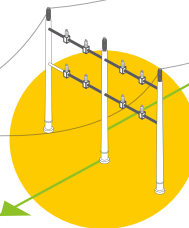
step 2
**STEP-UP
TRANSFORMER**

A step-up transformer increases the voltage to push the electricity over long distances.



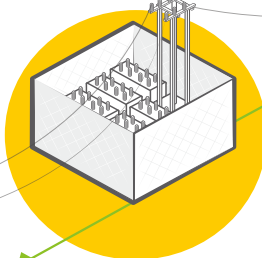
step 3
TRANSMISSION LINES

High-voltage electricity travels over long distances through these lines.



step 4
**TRANSMISSION
SUBSTATION**

Voltage is lowered at a transmission substation so electricity can travel across the local distribution system.

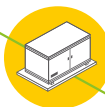
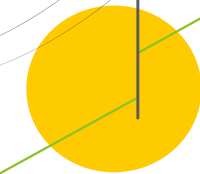


step 5
DISTRIBUTION SUBSTATION

These substations lower the voltage again so the electricity is ready to travel on distribution lines.

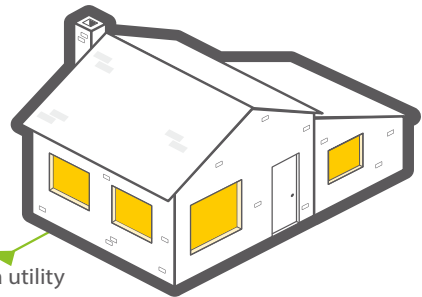
step 6
DISTRIBUTION LINES

Lower-voltage electricity travels through distribution lines, like the ones you typically see on the side of the road.



step 7
FINAL STOP

A transformer located on the ground or a utility pole reduces the voltage a final time, then electricity is sent inside your home, school or business.



Handle space heaters with care

Heating equipment, such as space heaters, kerosene heaters, fireplaces and wood-burning stoves, is a leading cause of fires in U.S. homes, according to the National Fire Protection Association. During a recent four-year period, fire departments responded to an estimated average of 48,530 fires involving heating equipment each year.

In addition:

- Heating equipment caused one in seven home fires and 19% of home fire deaths.
- Most home heating fire deaths (81%) included stationary or portable space heaters.
- More than half of the home heating fire deaths were caused by placing heating equipment too close to things that can burn, such as furniture, clothing, mattresses or bedding.
- Nearly half (48%) of all home heating fires occurred in December, January and February.
- Failure to clean equipment, such as chimney flues, accounted for a quarter of all heating equipment fires.

Follow these tips to use space heaters safely:

1. Read all instructions and use space heaters only as recommended.
2. Do not leave space heaters unattended.
3. Plug them directly into an outlet; most power strips and extension cords are not equipped to handle the energy spikes caused by space heaters cycling on and off.
4. Unplug any other items from the outlet you are using and try to use a dedicated circuit to avoid overload.
5. Keep children and pets away from space heaters.
6. Turn the heaters off before you leave the room or go to sleep.
7. Do not use heaters that are in disrepair or have frayed cords or damaged plugs.
8. Place them on flat, level surfaces and never on furniture, counters or carpet, which can overheat.
9. Unplug and put space heaters away (out of the reach of children) when not in use.

Use space heaters with care. For additional safety tips, visit www.SafeElectricity.org. ■

feeling chilled?

HEAT YOUR SPACE SAFELY

1. Keep flammable items at least 3 feet away
2. Place on a flat, level surface
3. Make sure the cord is not frayed or cracked
4. Plug it directly into an outlet
5. Follow all instructions and use models endorsed by a reputable testing lab
6. Do not use an extension cord or power strip, which can overheat
7. Do not use around small children or pets
8. Do not use one with a damaged plug or prongs

Safe Electricity.org®



Simplify the way you pay

Don't worry about your payment being lost in the mail. Avoid the hassle of late fees, save money every month on stamps and check blanks, and save valuable time with any of our simple and secure 24/7/365 telephone or online payment options:

1. Pay by telephone at 844-209-7159.
2. Pay online with just your account number and last name, using the "pay now" tab.
3. Log into SmartHub to view your bill as soon as it is available and make a payment or set up automatic payment from a credit card or bank account.
4. Download the SmartHub app on your iPhone or Android device. Log into your SmartHub account to view your bill as soon as it's available and make a payment or set up automatic payment.
5. Call us at 406-488-1602 to set up recurring automatic payment from your bank account via ACH.

Not registered for a free SmartHub account? Call us at 406-488-1602 and we will help you get set up today. ■

Password Cracking

Creating and remembering complex passwords can be daunting. To help make this easier to manage, think of a passphrase rather than a password. *ILove!ceCr3am* would be a good passphrase/password but very hard for an attacker to guess. And avoid using the same password for all your online accounts.

3200 W. Holly - Sidney, MT 59270

Phone: 406-488-1602

Fax: 406-488-6524

Website: www.lyrec.com

TRUSTEES

Allen Thiessen	President
Greg Rauschendorfer	Vice President
Dennis Schmierer	Secretary/Treasurer
Colin Gartner	Trustee
Tim Franzen	Trustee
Dennis Nelson	Trustee
Jim Vitt	Trustee

EMPLOYEES

Jason Brothen	General Manager
Jami Propp	Member Service Manager
Pam Wilcoxon	Chief Financial Officer
Melissa Buckley	Plant Accountant
Kyle Kavanagh	IT Coordinator
Margo Zadow	Billing Coordinator
Tiffani Hentges	Customer Service Representative
Chris Hillesland	Chief Operations Officer
Rich Gorde	Journeyman Lineman
Eric McPherson	System Controller
Kevin Goff	Operations Assistant
Kelly Keyser	Operations Manager
Aaron Eide	Journeyman Lineman
Bryan Franck	Journeyman Lineman
Jesse Obergfell	Journeyman Lineman
Tanner Roth	Journeyman Lineman
Ryder Peterson	Journeyman Lineman
Cole Jankovsky	Journeyman Lineman
Lee Delp	Apprentice Lineman
Preston Long	Apprentice Lineman
Trey Schepens	Apprentice Lineman
Jory Bell	Apprentice Lineman
Brandon Mueller	Master Electrician
Mike Eberling	Mechanic
Dan Gieser	EMS
Lee Alvstad	Mechanic/EMS
Richard Tremblay	EMS
Bo Kindopp	GIS/Easement Technician
Tom Hall	GIS Specialist
Corey Candee	Chief Information Officer
Jeremy Reese	Information Technology Technician
Braden Kindopp	Information Technology Technician
Edwin Gatzke	Line Locator/Groundsman
Justin King	Warehouse Supervisor
Dennis Fine	Summer Help

Your Touchstone Energy® Cooperative